



Techfast



Corporate Information

Date of Incorporation :19th July 2005

Factory Location :11 Jalan Pasaran 23/5, Seksyen 23
40300 Shah Alam Selangor Darul Ehsan,
Malaysia.

Tel: 603-5548 5112 Fax : 603-55485113

Nature of Business :Manufacturing of precision turned parts and
machining parts

Paid-up Capital :RM8,000,000

Workforce : 70 people

Key Management Personnel

Jason Yap Yoon Sing

Mr Jason Yap is the founder of the company. He has more than 20 years experience in this industry. His has a hands-on approach in managing the Group's operations and is recognised by his peers in the self-clinching fastener industry worldwide.

Chan Chun Yi

Mr Chan Chun Yi is the Production & Technical Manager of Techfast Precision Sdn Bhd. He has more than 15 years of hand on technical experience and he currently incharge of entire factory.

Norafidah Oyop

Ms Norafidah Oyop is the Planning manager of Techfast Precision Sdn Bhd. She is responsible for production planning and monitoring production activities.

Awards



Golden Bull Award (2004 – 2006)

**For 2nd, 3rd and 4th Malaysia 100
outstanding SMEs
Organised by Nanyang Siang Pau**



Enterprise 50 Award (2004 & 2005)

**Organised by Small and Medium
Industries Development Corporation and
Deloitte Kassim Chan**



SMI Recognition Award Series 2004 (Best Product Award) & 2007 (Achiever)

Organised by SMI Association of Malaysia



Gold Medal, Malaysia Emerging Brand Award 2004/05

**For Malaysian Export Brand (Products)
Organised by Brandz Group & Malaysian
Chamber of Commerce and Industry**



Selangor Export Excellent Award (Manufacturing) 2005

**Organised by Selangor State Investment
Centre, Malaysia (SSIC)**

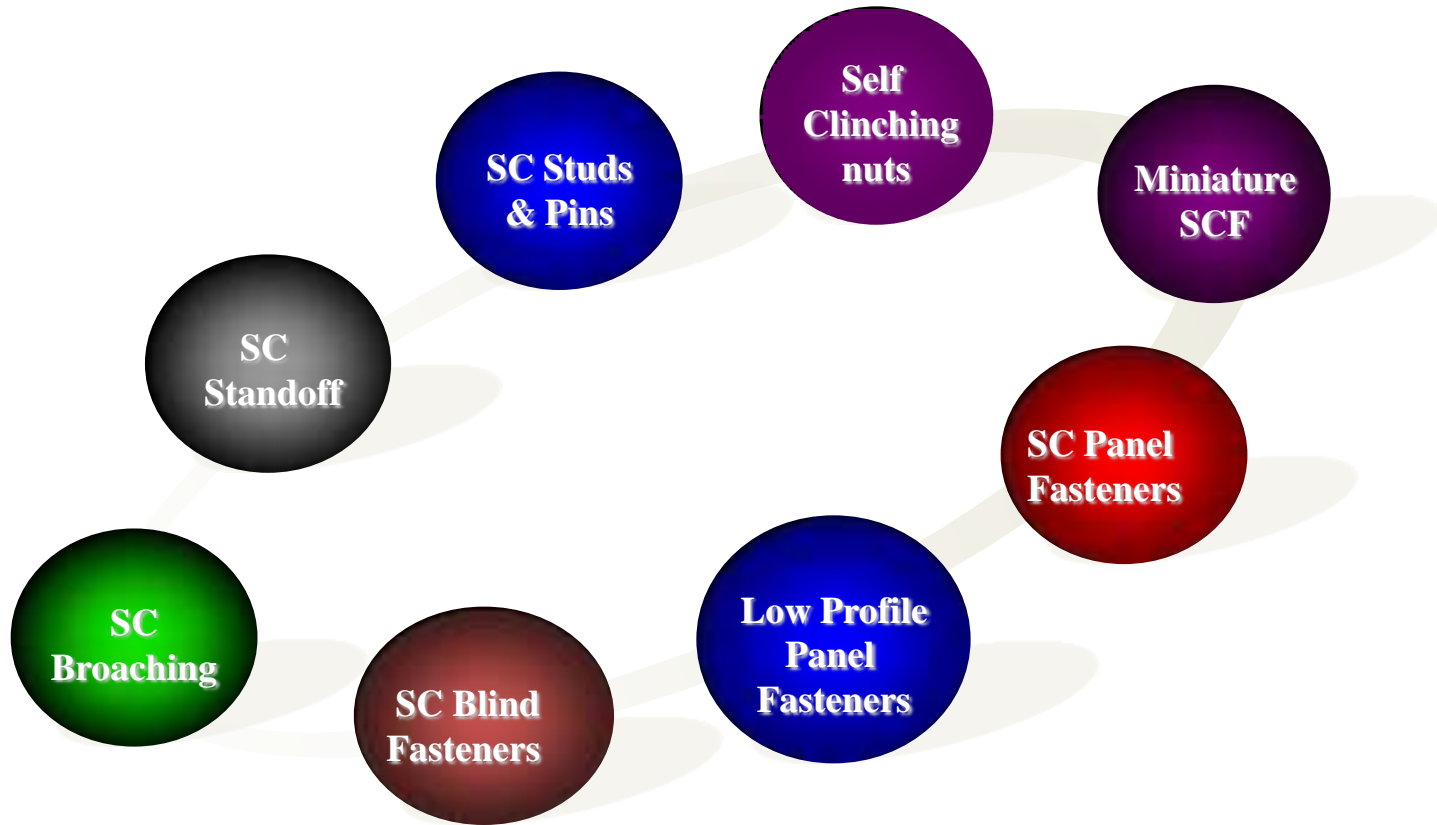


Merit Certificate of Industry Excellence Award (Export) 2005

Organised by MATRADE

Product

Self-Clinching Fasteners



Product Cont'd

Electronic Hardware



- Male female standoffs
- Spacers
- Double end standoffs
- Swage standoffs

- Hex jack screws
- Captive panel screws
- Shoulder screws
- Turn parts

Product Cont'd

Self Clinching Fastener



Product Cont'd

Electronic Hardware



Product Cont'd

Machining Turned Parts



Product Cont'd

Connector



Product Cont'd

Oil and Gas



Product Application



Edupad-LCDs



Computer Servers/Networking products



Desktop Computers

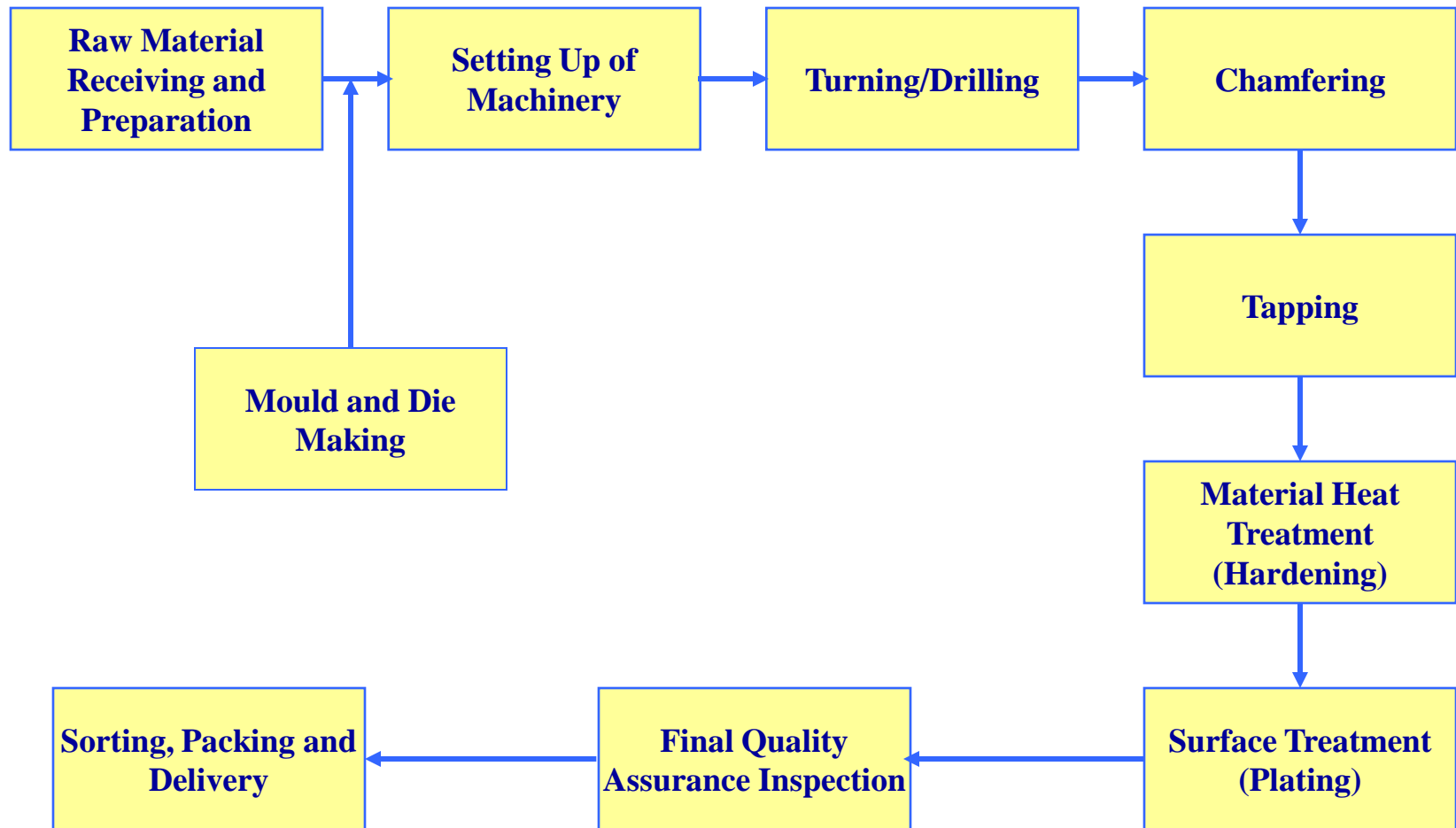


LCD Monitors



LCD TVs

Process Flow Chart



R&D / Quality Equipment

Measuring Gauges



Torque Tester



Push Out Tester



Profile Projector

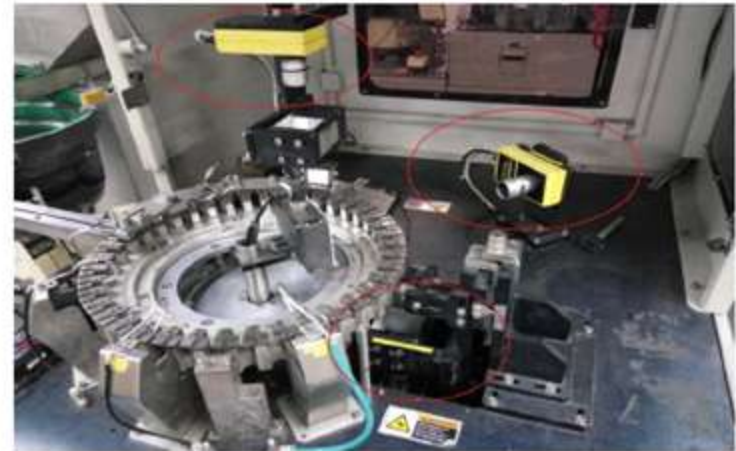


Quality Control

- ✚ An ISO9001-2015 Certified Company**
- ✚ Part Quality Assurance (PQA) to ensure raw material quality**
- ✚ Sampling Method (ISO Level II, AQL = 0.40)**
- ✚ In Process Quality Control (IQPC) to ensure production quality**
- ✚ Outgoing Quality Control (OQC) to ensure finished goods quality**

Quality Enhancement

- Procured 4 units of Automated Fastener Inspection machines
- Inspection of critical geometric features at high speed 100% , up to 500ppm
- PC-based software to control the handler system
- Equip Top Camera, Side Camera and Bottom Camera.



Manufacture Facility

Single Spindle Lathe Machine	:	54 units
CNC Lathe Machine	:	31 units
Semi-Auto Tapping Machine	:	30 units
Semi-Auto Chamfering Machine	:	13 units
Auto Tapping Machine	:	7 units
Auto Chamfering Machine	:	3 units
Auto Optical Scanning Machine	:	4 units

Manufacture Facility cont'd



Single Spindle Lathe Machine



Tapping & Chamfering Machine



CNC Lathe Machine



Thread Rolling Machine