

www.oriem.com.my

Oriem Technology Sdn Bhd

Company Profile

Oriem Technology Sdn. Bhd.



Design and manufacturing of epoxy encapsulation material for photonic's application.

Company Profile



Outlook of ORIEM

Build up area: 24,000 sq ft

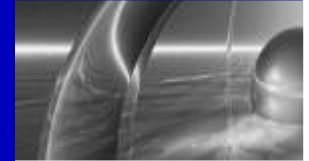
- ❖ *Or = Oxirane*
- ❖ *I = Innovation*
- ❖ *E = Encapsulation*
- ❖ *M = Materials*

Date of Incorporation : 30th October 2002 (Oriem)

Factory Location

Plot 25, Phase 4, Non-FTZ, Bayan Lepas
Industrial Estate, 11900 Bayan Lepas, Penang

Company Profile



SALES TURNOVER

Yearly group sales turnover is Ringgit Malaysia 16.0 millions.

STAFF

Total manpower :
4 for Oriem

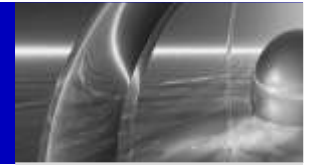
CAPITAL

Authorized/Paid Up Capital is RM 1,500,000.00 (Oriem)

OUR VISION

We strive to become Leading Research & Development (R&D) and Manufacturing Company.

Company Profile



QUALITY POLICY / MISSION

Our Mission is: To meet and exceed customers' expectations through continual improvements in products' quality.

PRINCIPAL ACTIVITY

Main activity:
- LED encapsulation for lamps or Radial devices.

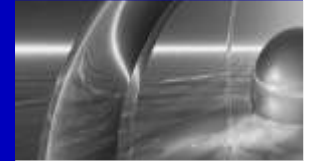
TECHNICAL TEAM

The company has well qualified technical staff with experience in polymer industry and technical advisors from local universities.

CUSTOMER BASE

LED manufacturer

Company Profile



CAPACITY

14,000 kgs per month for Oriem

TAX INCENTIVE

Oriem obtained 100% tax exemption from 2007-2011

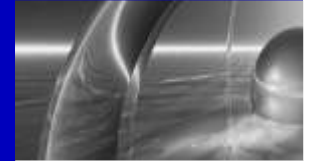
PRODUCTION MACHINERY

Oriem – (1) units of Internal Mixer

OUR BELIEVE IN QUALITY

Quality is always our number ONE priority. We certified to the MS ISO 9001:2008 Quality System, by Certification Panel of SIRIM QAS Sdn Bhd and UKAS (United Kingdom Accreditation Service)

Key Management Personnel



LU ENG SHEAN

The Managing Director and founder of the company. Over the last decade, under his leadership and business entrepreneurship, his team started to build up the strong internal R&D capabilities and successfully developed a series of polymer productions for semiconductor and optoelectronic applications which contributed to Cape and Oriem's success today.

TERESA TAY MING MENG

The Assistant Business Development Manager and HR & Finance manager. She is one of the pioneer staff members as she had joined Cape and Oriem since its inception. With her management & relationship skill, the company has built up well interaction with all the supply chains.

KHOR HOOI YONG

The Head of Quality Assurance Department of Cape and Oriem. With her aggressive and positive character, she has being brought the company towards to improvement and growth for the last few years.



Key Management Personnel (Cont'd)



CHEAH CHEE WAI

The Senior Technical Service Engineer of Cape and Oriem. Upon graduation from Polymer engineering, he joined Cape and Oriem as a process engineer where he gained valuable experience in applied polymer and encapsulation development. She is currently responsible for the Product and Technical Support of Cape and Oriem.

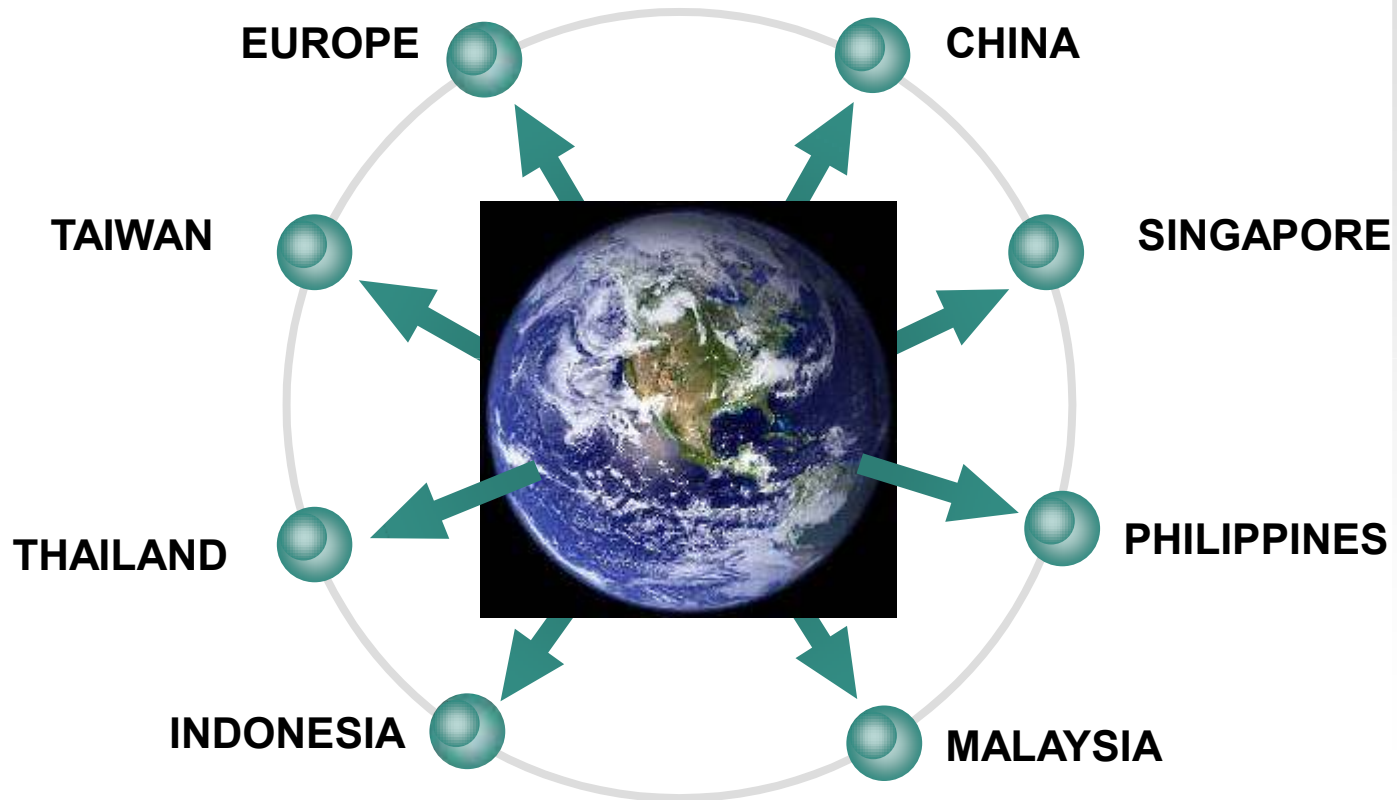
LU ENG KOON

The Head Of Production of Cape & Oriem. He is also one of the pioneer staff members and contributed to the success of organisation over the last decade. He is a hand on in production and who is responsible for setting up production processes. He currently overseas the overall marketing, engineering and maintenance function of Cape and Oriem.

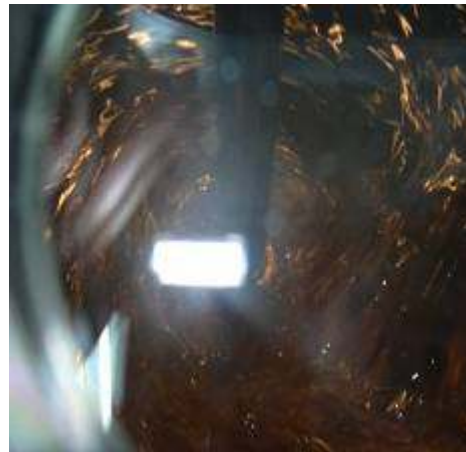
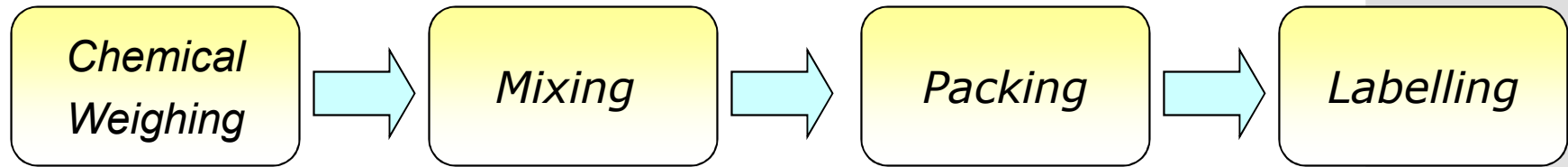
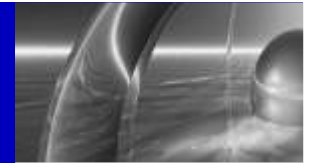
LAM CHEE KHEONG

The Senior Technical Service Engineer. With his more than 8 years experiences and academic knowledge in the industry, he had provided & satisfied the customers with a good supports and services.

Sales Distribution by Country



PROCESS FLOW – Oriem



QUALITY SYSTEM



- ❖ **Certified with ISO 9001:1994 in year 2001.**
- ❖ **Conversion into ISO 9000 : 2000 in year 2003.**
- ❖ **Conversion into ISO 9000 : 2008 in year 2009.**



QUALITY CONTROL



- ❖ **Incoming Quality Control (IQC) to ensure raw material quality.**
- ❖ **In Process Quality Control (IPQC) to ensure production quality.**
- ❖ **Outgoing Quality Control (OQC) to finished goods quality before delivery.**



QUALITY CONTROL TOOLS & FACILITY

